

**WARDS**  
**SEA KING**

**OUTBOARD  
MOTOR**

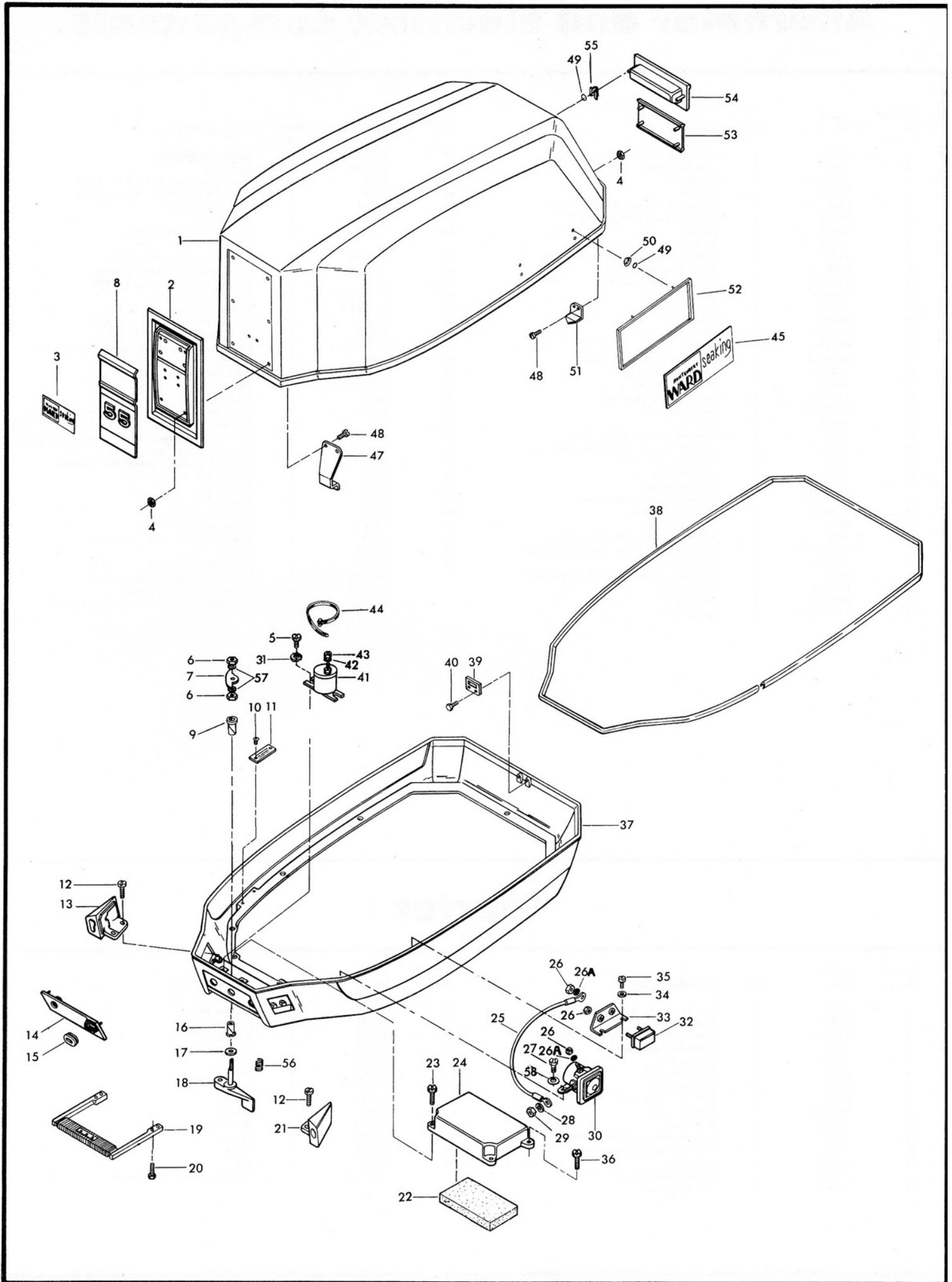
**PARTS CATALOG**

**55**

**B.I.A. CERTIFIED BRAKE H.P. AT 5250 R.P.M.**

**MODEL  
VWB-27456**

***SEA KING*—SOLD EXCLUSIVELY BY MONTGOMERY WARD**

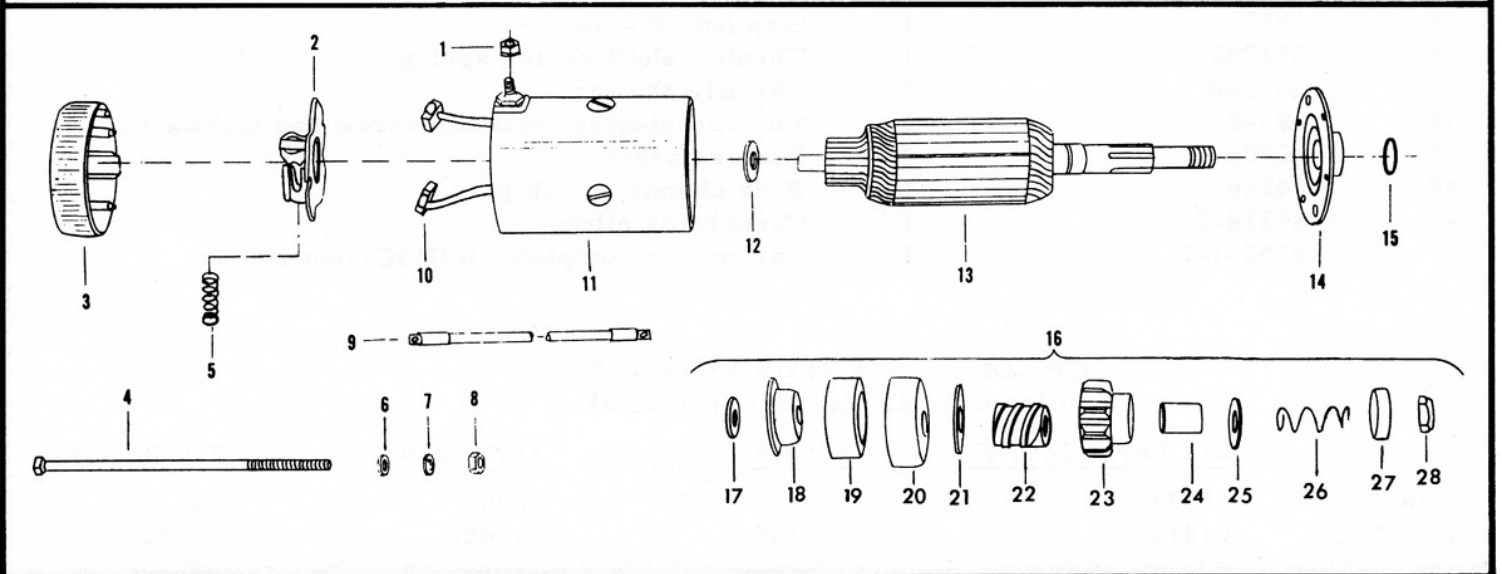
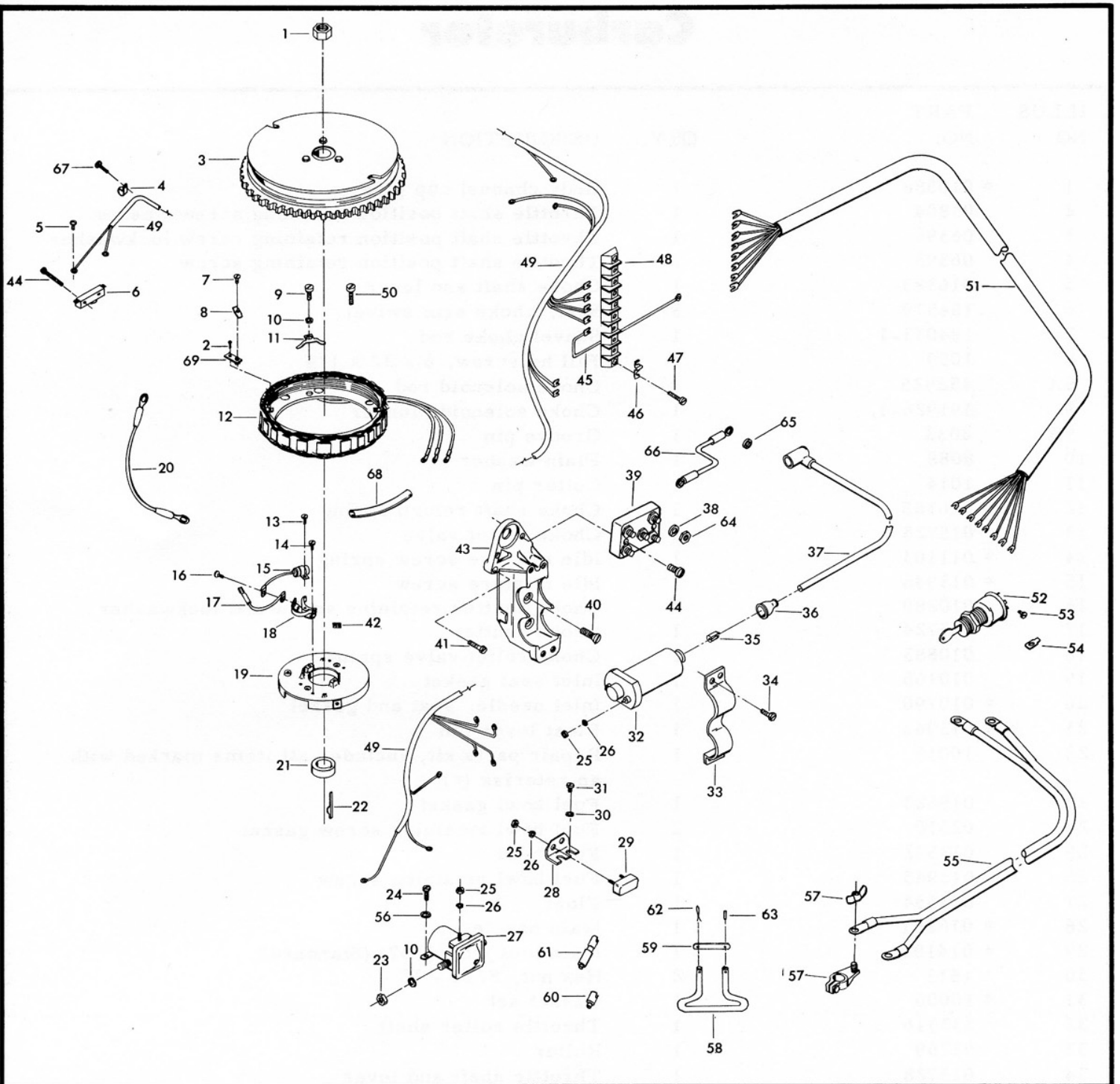


# Engine Cover and Support Plate

ILLUS. NO.	PART NO.	QTY.	DESCRIPTION	ILLUS. NO.	PART NO.	QTY.	DESCRIPTION
1	S452712	1	Engine cover w/retainer, tilt handle and fasteners	30	177917	1	Starter relay
2	402512-1	1	Plate, front	31	8083	2	Spring lockwasher
3	A452512	1	Insert, front plate	32	91460-2	1	Circuit breaker
4	7011	4	Elastic stop nut, 10 - 24	33	91446-1	1	Circuit breaker bracket
5	1993	2	Hex hd screw, 1/4 - 20 x 5/8	34	8011	2	Plain washer
6	1518	2	Hex nut, S.S., 5/16 - 18	35	1733	2	Pan hd screw, 10 - 24 x 9/16
7	89777-1	1	Latch cam	36	1914	2	Hex hd machine screw, 1/4 - 20 x 3/4
8	453893	1	Plate, insert "55"	37	312038	1	Support plate
9	307818	1	Bearing, latch shaft	38	309756	1	Support plate packing
10	1293	2	Drive screw, 2 x 3/16	39	312774	1	Bracket, rear retainer
11	A197395-3	1	Plate, identification	40	1481	2	Hex cap screw, 1/4 - 20 x 9/16
12	1733	4	Pan hd screw, 10 - 24	41	289924-1	1	Choke solenoid
13	402189	1	Bushing, cable entry	42	8056	1	Spring lockwasher
14	312888	1	Panel, support plate	43	1647	1	Hex nut, 8 - 32
15	289899	1	Grommet, battery cable entry	44	1877	1	Ty-rap
16	307818	1	Bearing, latch shaft	45	A451892	2	Insert, side plate
17	1987	1	Plain washer	47	A312778-1	1	Engine cover retainer, forward w/screws and nuts
18	A312763	1	Cover latch handle w/shaft	48	1475	4	Fill hd screw, S.S., 10 - 24 x 1/2
19	312647	1	Carrying handle	49	85735	27	Seal
20	1199	4	Hex hd machine screw, 1/4 - 20 x 1	50	1753	27	Fastener
21	402477	1	Bushing, electric cable entry	51	A312480	1	Engine cover retainer w/screws and nuts
22	307860	1	Intake silencer	52	451392	2	Side plate
23	1198	2	Hex hd machine screw, 1/4 - 20 x 1	53	453180	1	Trim, rear "55"
24	A307779	1	Baffle, air intake	54	401269-1	1	Tilt handle
25	307683	1	Wire, circuit breaker	55	9037	2	Fastener
26	1513	5	Hex nut, 10 - 32	56	309300	1	Spring
26A	1975	3	Spring lockwasher	57	8096	2	Spring lockwasher
27	1238	8	Hex cap screw, 1/4 - 20 x 3/4	58	8094	1	Plain washer
28	8096	2	Lockwasher		453385	1	Decal, "Alternator Electric" (not shown)
29	1615	2	Hex nut, S.S., 5/16 - 24				

## NOTE

To obtain identification plate, order part number A197395-3. Order for identification plate must be accompanied by a notarized statement from the dealer, customer and statement from a law enforcement agency verifying that the plate is lost or damaged beyond repair. This statement must also include name and address of owner and model and serial number of motor.

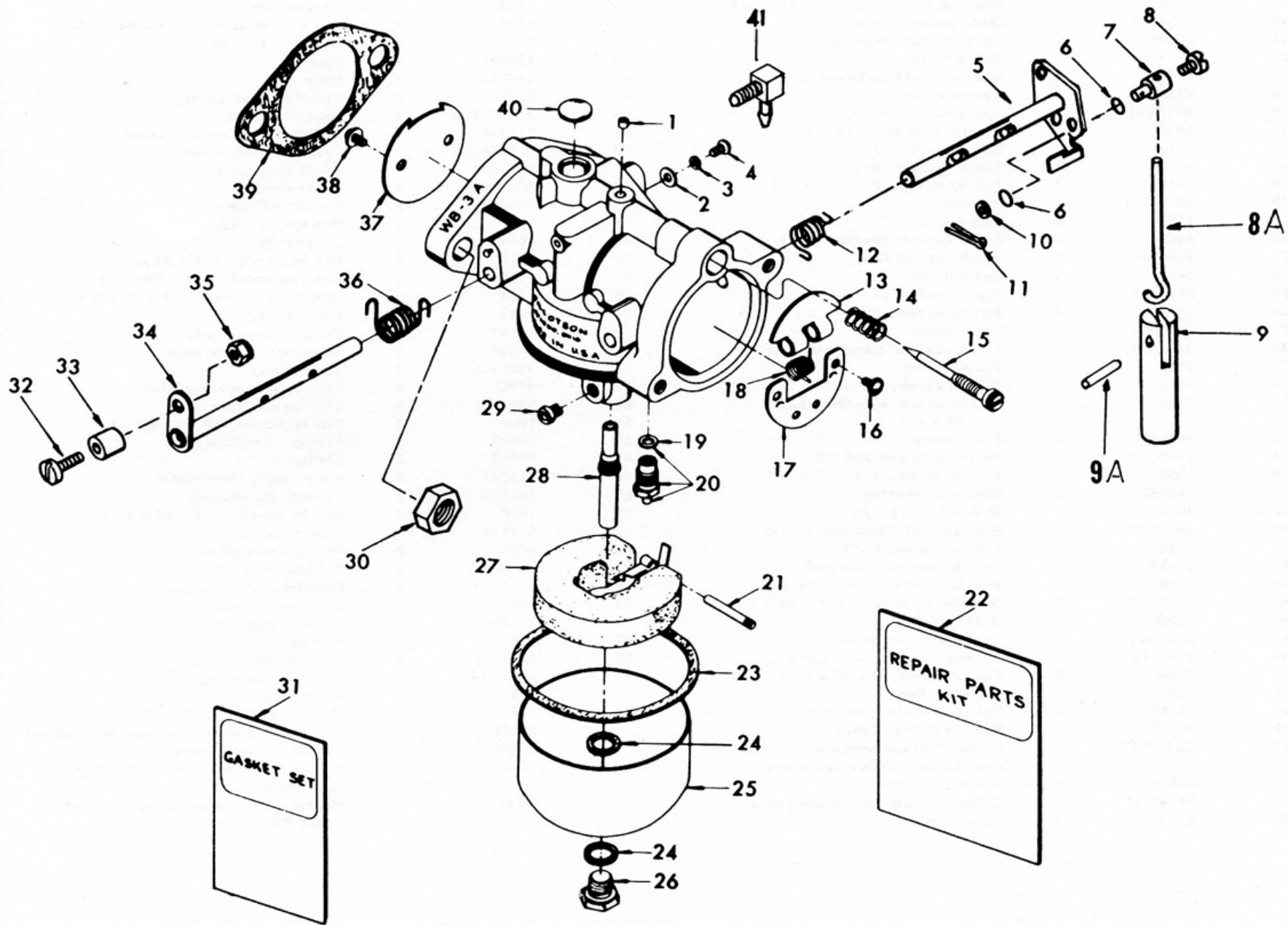


# Alternator and Electrical Components

ILLUS. NO.	PART NO.	QTY.	DESCRIPTION	ILLUS. NO.	PART NO.	QTY.	DESCRIPTION
1	1920	1	Hex nut, 5/16 - 18	38	8056	5	Spring lockwasher
2	1958	1	Pan hd screw, 6 x 7/16	39	311450	1	Rectifier
3	203097-4	1	Flywheel	40	1164	2	Flat hd screw, 1/4 - 20 x 1 1/8
4	92446	1	Clamp	41	1198	1	Hex slot hd screw, 1/4 - 20 x 1
5	1645	2	Round hd screw, 6 - 32 x 1/4	42	12227	2	Cam wiper felt
6	84449	1	Neutral interlock switch	43	311501	1	Coil mount
7	12167	2	Screw	44	1654	4	Fill hd machine screw, 1/4 - 20 x 1
8	12172	2	Terminal				
9	1130	1	Fill hd screw, 5/16 - 18 x 5/8	45	307104	1	Lead wire, thermoswitch
10	8096	5	Spring lockwasher	46	307317	1	Clip, terminal block ground
11	91479	3	Breaker plate shoe	47	1974	2	Pan hd screw, 10 - 24 x 5/8
12	268095	1	Stator	48	289497-1	1	Terminal block
13	12083	2	Screw	49	311744-2	1	Wiring harness
14	12090	4	Screw	50	1123	2	Fill hd screw, 5/16 - 18 x 1
15	12139-1	2	Condenser	51	85843	1	Electric control cable
16	12189	2	Screw	52	A296918-1	1	Ignition switch w/key and mounting nut
17	12174-1	2	Primary interlead wire	53	1280	5	Pan hd screw, 8 - 32 x 1/4
18	12329-1	2	Breaker point set	54	203673	2	Slide terminal
19	12344	1	Breaker plate	55	381896-4	1	Battery cable
20	289664	1	Wire, stator ground	56	8094	2	Plain washer
21	268002-2	1	Breaker cam	57	71H26	2	Battery terminal (Accessory Item)
22	92498	1	Key	58	137	1	Remote steering bracket
23	1615	2	Hex nut, S.S., 5/16 - 24	59	111694-1	1	Remote steering bracket latch
24	1238	2	Fill hd screw, 1/4 - 20 x 3/4	60	58685-2	1	Rod end connector (shift)
25	1513	9	Hex nut, 10 - 32	61	A58976-1	1	Rod end plunger assembly (throttle)
26	1975	7	Lockwasher	62	1020	1	Cotter pin
27	177917	1	Starter relay	63	8535	1	Spring pin
28	91446-1	1	Circuit breaker bracket	64	1647	5	Hex nut, 8 - 32
29	91460-2	1	Circuit breaker	65	8083	1	Spring lockwasher
30	8011	2	Plain washer	66	345683	1	Wire, ground
31	1733	2	Pan hd screw, 10 - 24 x 9/16	67	1239	1	Hex hd screw, 1/4 - 20 x 5/8
32	2A91475-2	2	Coil w/boot, clip, washer and nut	68	94914	1	Sleeve
33	311513	1	Coil clamp	69	12166	2	Terminal complete
34	1502	4	Hex hd cap screw, 1/4 - 20 x 5/8		453398	1	Decal, wiring (not shown)
35	203673	2	Coil clip		K750-1	2	Sparkie kit (not shown)
36	203276	2	Coil boot		A27232	1	Emergency starter rope (not shown)
37	A307664-1	2	Lead wire				

# Starter

ILLUS. NO.	PART NO.	QTY.	DESCRIPTION	ILLUS. NO.	PART NO.	QTY.	DESCRIPTION
1	15072	1	Hex lock nut, 1/4 - 20	16	15013	1	Bendix drive
2	15038	1	Brush plate and holder	17	15092	1	Spacer
3	15037	1	Head assembly, commutator end	18	15093	1	Washer
4	15036	2	Thru bolt package	19	15082	1	Cushion
5	15034	1	Spring set	20	15083	1	Cup
6	8028	2	Plain washer	21	15091	1	Washer
7	8060	2	Lockwasher	22	15084	1	Screw shaft
8	1514	2	Hex nut, 1/4 - 20	23	15090	1	Pinion
9	307908	1	Starter lead	24	15085	1	Sleeve
10	15042	1	Brush set	25	15089	1	Washer
11	15043	1	Frame and field assembly	26	15088	1	Spring
12	15073	1	Thrust washer package	27	15086	1	Stop
13	15044	1	Armature	28	15087	1	Nut
14	15021-1	1	Head assembly, drive end		A201955	1	Starter motor, complete
15	15000	1	"O" ring seal				

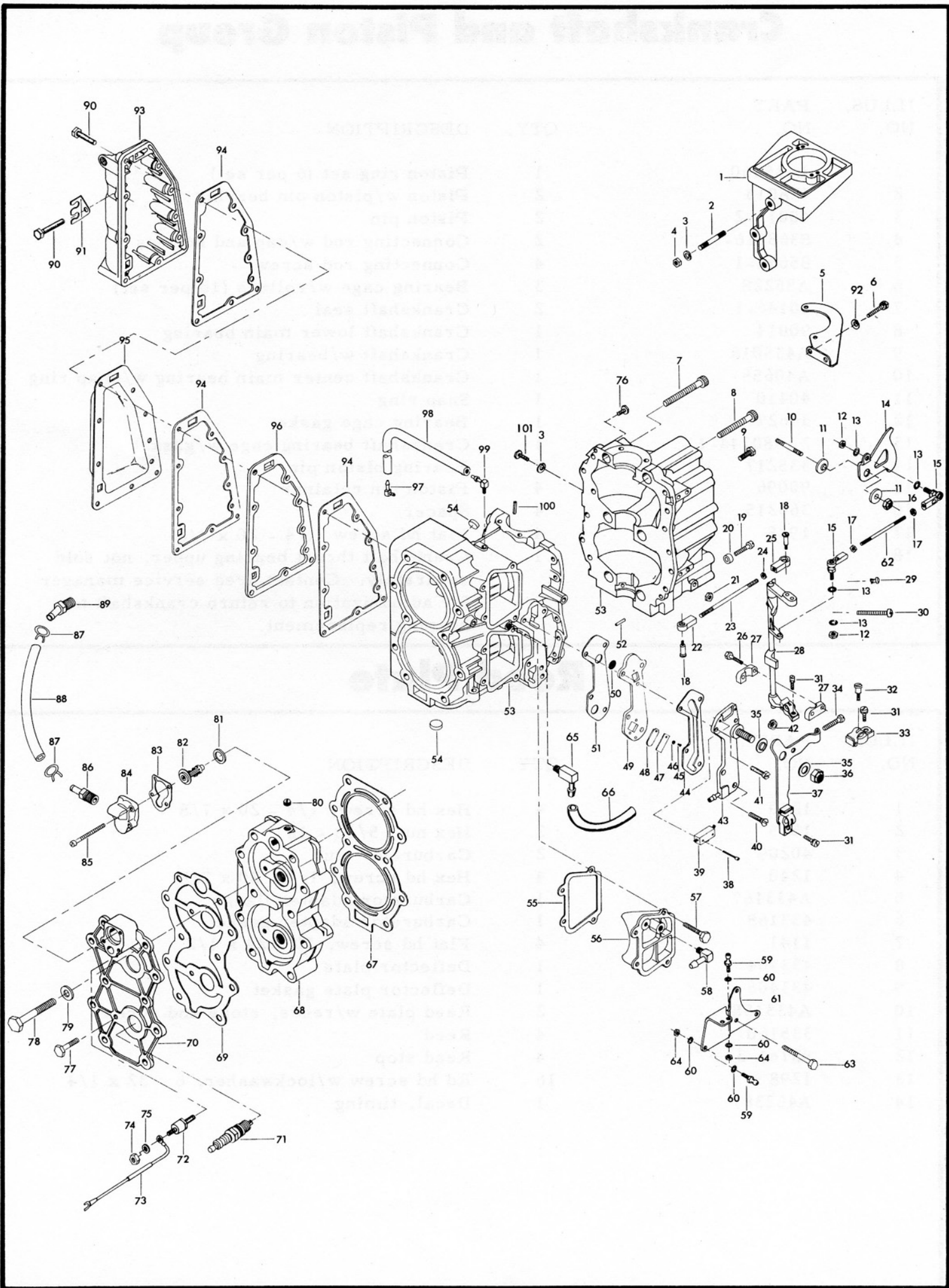


# Carburetor

ILLUS. NO.	PART NO.	QTY.	DESCRIPTION
1	* 010588	1	Body channel cup plug
2	03804	1	Throttle shaft position retaining screw washer
3	06396	1	Throttle shaft position retaining screw lockwasher
4	06393	1	Throttle shaft position retaining screw
5	016383	1	Choke shaft and lever
6	184579	3	Seal, choke arm swivel
7	184033-1	1	Swivel choke rod
8	1059	1	Fill hd screw, 6 - 32 x 1/4
8A	452925	1	Choke solenoid rod
9	391926-1	1	Choke solenoid plunger
9A	2033	1	Groove pin
10	8088	1	Plain washer
11	1014	1	Cotter pin
12	* 016385	1	Choke shaft return spring
13	015725	1	Choke relief valve
14	* 011103	1	Idle mixture screw spring
15	* 013946	1	Idle mixture screw
16	* 010280	2	Choke shutter retaining screw and lockwasher
17	015724	1	Choke shutter
18	010883	1	Choke relief valve spring
19	010165	1	Inlet seat gasket
20	* 010790	1	Inlet needle, seat and gasket
21	* 013944	1	Float lever pin
22	10019	1	Repair parts kit, includes all items marked with an asterisk (*)
23	015623	1	Fuel bowl gasket
24	02510	2	Fuel bowl retaining screw gasket
25	013552	1	Fuel bowl
26	013945	1	Fuel bowl retaining screw
27	013554	1	Float
28	* 016251	1	Main nozzle
29	* 014191	1	Main fuel jet (.0937) (Standard)
30	1515	2	Hex nut, 5/16 - 18
31	* 10000	1	Gasket set
32	333316	1	Throttle roller shaft
33	92759	1	Roller
34	015728	1	Throttle shaft and lever
35	1977	1	Stop nut, 8 - 32
36	* 014292	1	Throttle shaft return spring
37	016340	1	Throttle shutter
38	* 08942	2	Throttle shutter retaining screw and lockwasher
39	40906-1	1	Flange gasket
40	* 04326	1	Body channel welch plug
41	84314-2	1	Carburetor elbow
	435061-2	1	Carburetor complete (WB15C) (not shown)

OPTIONAL SIZE MAIN FUEL JETS  
(Use Only At Altitudes Indicated)

	<u>Sea Level-1250 Ft.</u>	<u>1250-3750 Ft.</u>	<u>3750-6250 Ft.</u>	<u>6250-8250 Ft.</u>
Size	.0937	.092	.090	.088
Part No.	014191	014190	015406	013193

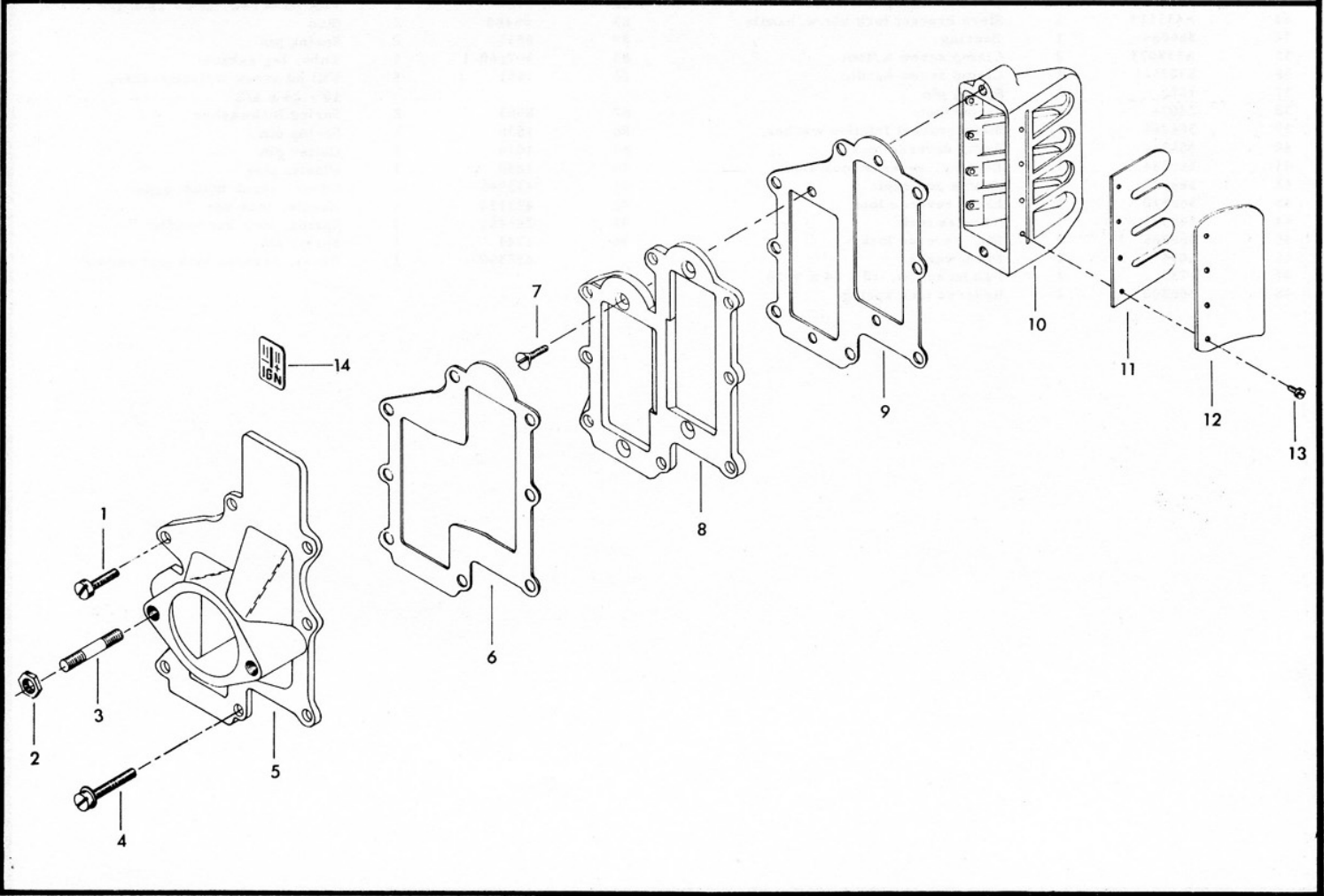
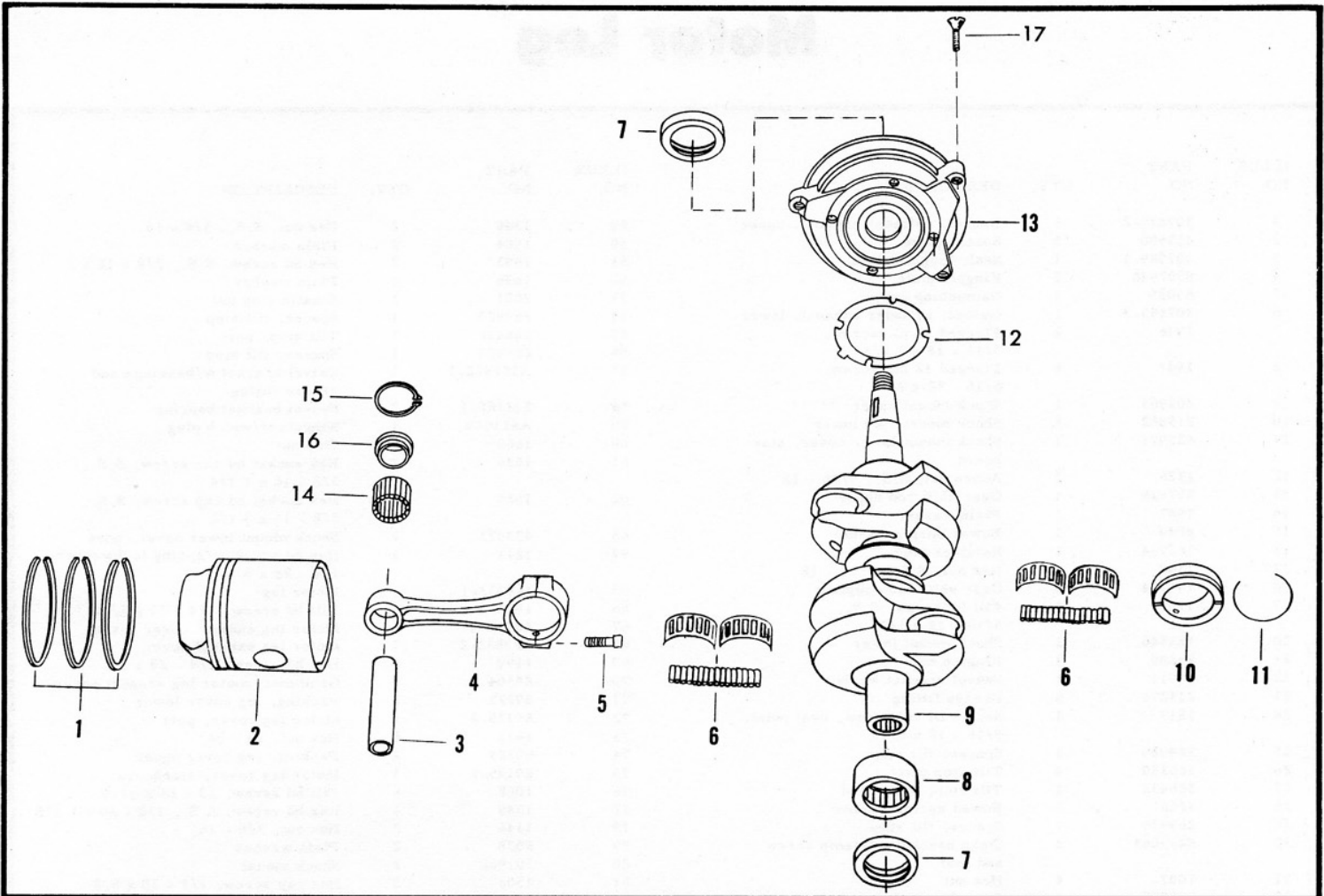




# Power Head

ILLUS. NO.	PART NO.	QTY.	DESCRIPTION	ILLUS. NO.	PART NO.	QTY.	DESCRIPTION
1	345427-1	1	Bracket, starter mounting	53	A435010-1	1	Cylinder w/crankcase cover, deflector plate and screws
2	307211	3	Stud				Welch plug
3	8096	4	Spring lockwasher	54	1524	1	Transfer port cover gasket
4	1515	3	Hex nut, 5/16 - 18	55	40223	2	Transfer port cover
5	433675	1	Starter mounting bracket, lower	56	A411222	1	Hex slot hd screw, 1/4 - 20 x 9/16
6	1993	2	Hex slot hd screw, 1/4 - 20 x 5/8	57	1481	1	Elbow, fuel line
7	1646	1	Hex socket hd cap screw, 3/8 - 16 x 2 1/4	58	84314-2	1	Rod end connector stud
8	1879	5	Hex socket hd cap screw, 3/8 - 16 x 1 5/8	59	98273	2	Internal tooth lockwasher
9	1914	9	Hex slot hd screw, 1/4 - 20 x 3/4	60	8058	4	Connector stud bracket
10	433209	1	Stud, throttle cam	61	A267371-1	1	Throttle link
11	269319	2	Throttle cam bearing	62	85502	1	Hex slot hd screw, 1/4 - 20 x 3/4
12	1513	2	Hex nut, 10 - 32	63	1238	3	Hex nut, 10 - 32
13	8058	4	Internal tooth lockwasher	64	1513	2	Elbow
14	433192	1	Throttle cam	65	404801	1	Hose
15	A269141-1	2	Ball joint w/bearing	66	433254	1	Cylinder head gasket
16	1910	1	Elastic stop nut, 1/4 - 20	67	201529-1	1	Head, cylinder
17	1513	2	Hex nut, 10 - 32	68	A311518-3	1	Cylinder head cover gasket
18	84026	2	Spark control swivel	69	311996	1	Cylinder head cover
19	1134	2	Fill hd screw, 8 - 32 x 1 1/8	70	311995-1	1	Spark plug (L-4-J)
20	307942-1	2	Bumper	71	S174227	2	Thermoswitch
21	1770	2	Stop nut, 8 - 32	72	A311449-1	1	Thermoswitch wire
22	84036	1	Spark control bearing, L. H.	73	307104	1	Hex nut, 8 - 32
23	269445	1	Spark control link	74	1647	1	Lockwasher
24	1473	1	Hex nut, 10 - 24	75	8056	1	Hex hd screw, 1/4 - 20 x 5/8
25	84035-2	1	Spark control bearing, R. H.	76	1922	3	Hex cap screw, 1/4 - 20 x 5/8
26	1995	4	Fill hd screw, 10 - 24 x 1	77	1502	1	Hex hd cap screw, 3/8 - 16 x 2 1/2
27	433689	4	Towershaft	78	1184	10	Plain washer
28	A433838	1	Towershaft w/clamp and swivel	79	8039	1	Plug, cylinder head
29	1727	1	Plastic rivet	80	19109	1	Grommet, thermostat
30	1969	1	Fill hd screw, 1/4 - 20 x 3/4	81	97504	1	Thermostat
31	1556	2	Fill hd screw w/lockwasher, 10 - 24 x 3/8	82	97068-1	1	Thermostat cover gasket
32	405457	2	Pivot screw	83	97067	1	Thermostat cover
33	K405020	1	Swivel w/screw and nut	84	97066-1	3	Fill hd screw, 10 - 24 x 1 1/16
34	1969	1	Fill hd screw, 1/4 - 20 x 3/4	85	1069	1	Fitting, thermostat
35	269052	2	Shift arm bearing	86	97275	2	Clamp
36	7004	1	Stop nut, 7/16 - 20	87	97772	1	Water tube, thermostat
37	A433876	1	Shift arm w/clamp and swivel	88	311247	1	Fitting, thermostat
38	1654	2	Fill hd screw, 6 - 32 x 7/8	89	141275	1	Hex hd screw, 1/4 - 20 x 2 1/2
39	84449	1	Switch, neutral interlock	90	1972	9	Lead wire clip
40	1136	2	Flat hd screw, 1/4 - 20 x 1	91	901834	1	Spring lockwasher
41	1198	2	Hex slot hd screw, 1/4 - 20 x 1	92	8083	2	Exhaust port cover
42	85610	1	Bearing	93	A433152	1	Exhaust port plate gasket
43	A433471	1	Cylinder drain cover	94	40154-3	3	Exhaust port plate
44	93472-1	1	Cylinder drain cover gasket	95	40151-1	1	Spacer, exhaust cover
45	1286	2	Pan hd screw, 4 - 40 x 3/16	96	311999-1	1	Fitting
46	8003	2	Plain washer	97	366314	1	Hose w/check valve
47	93920	2	Cylinder drain reed stop	98	S433758	1	Elbow w/metering cup
48	18160-1	2	Reed, cylinder drain	99	A213314-1	1	Spring pin
49	2A433757	1	Cylinder drain reed plate w/reeds, reed stops, screws and screen	100	8545	1	Hex cap screw, 5/16 - 18 x 5/8
50	92811	2	Screen, cylinder	101	1857	1	Crankcase parting line seal (not shown)
51	93748-1	1	Cylinder drain reed plate gasket		269122-1	1	Gasket set (not shown)
52	8559	2	Dowel pin		G1007-1	1	Engine touch-up paint, spray bomb, Blue Enamel
					K747	1	Engine touch-up paint, spray bomb, Frost White Flat
					K737	1	

# EXPLODED VIEW

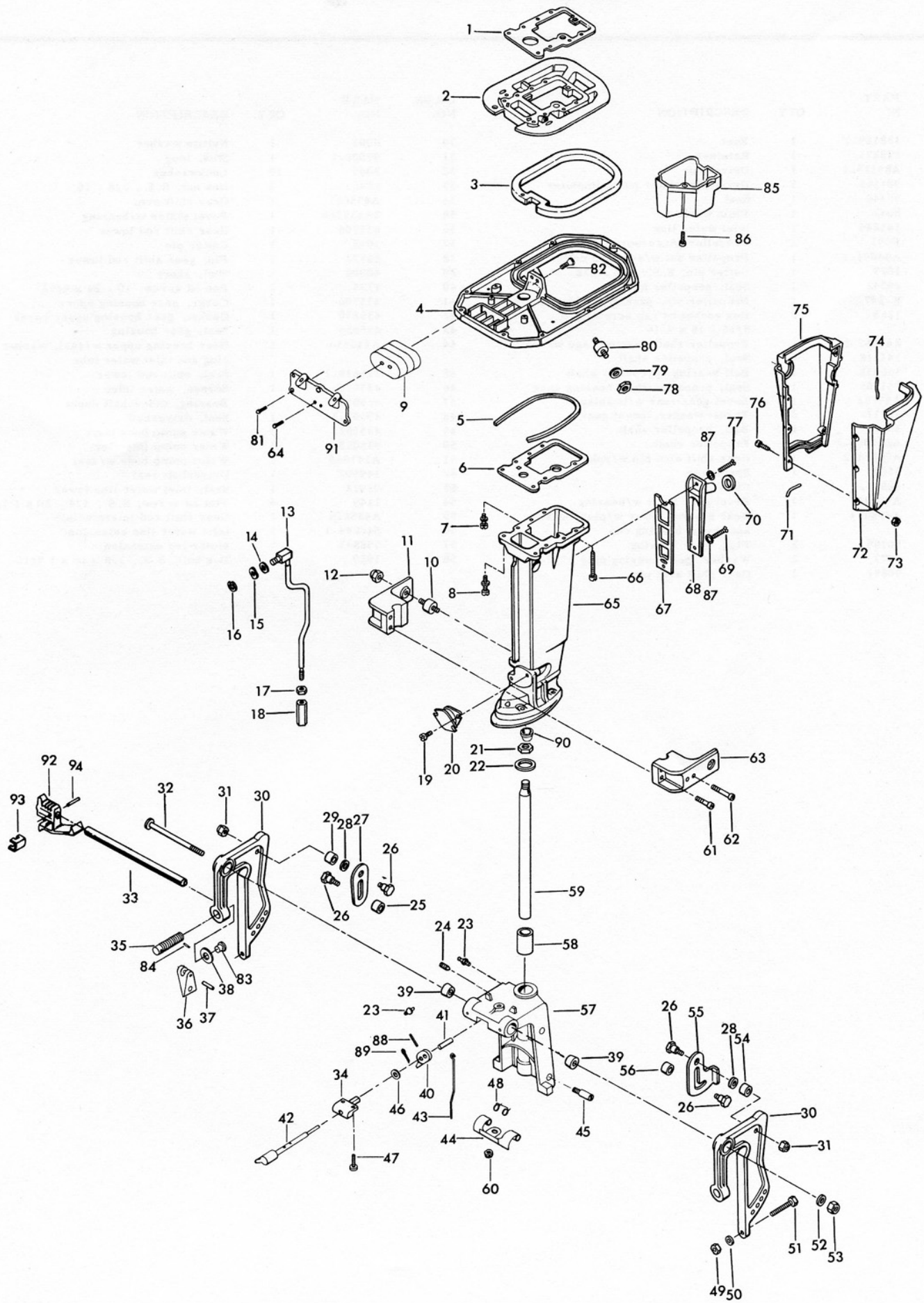


# Crankshaft and Piston Group

ILLUS. NO.	PART NO.	QTY.	DESCRIPTION
1	A435260	1	Piston ring set (6 per set)
2	428015	2	Piston w/piston pin bearing
3	40017-2	2	Piston pin
4	S366016-3	2	Connecting rod w/cap and screws
5	85634-1	4	Connecting rod screw
6	A85228	3	Bearing cage w/rollers (16 per set)
7	40146-1	2	Crankshaft seal
8	90014	1	Crankshaft lower main bearing
9	A435018	1	Crankshaft w/bearing
10	A40655	1	Crankshaft center main bearing w/snap ring
11	40410	1	Snap ring
12	366277	1	Bearing cage gasket
13	2A380144-1	1	Crankshaft bearing cage w/gasket
14	335217	2	Bearing piston pin
15	90096	4	Piston pin retainer
16	366215	4	Spacer
17	1948	4	Flat hd screw 1/4 - 20 x 7/8
18		1	Crankshaft thrust bearing upper, not sold separately. Contact area service manager for authorization to return crankshaft for bearing replacement.

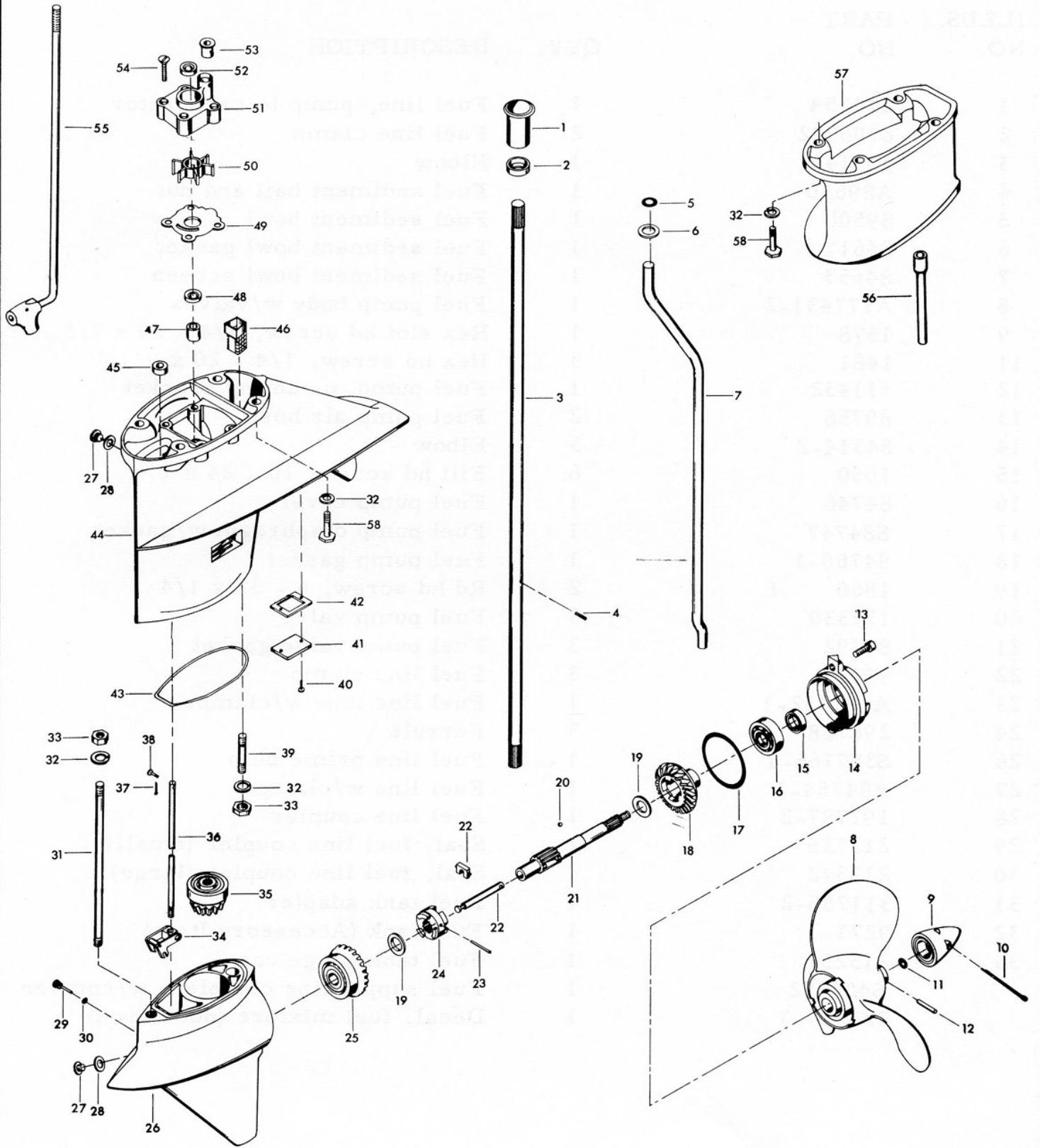
# Reed Plate

ILLUS. NO.	PART NO.	QTY.	DESCRIPTION
1	1240	4	Hex hd screw, 1/4 - 20 x 7/8
2	1515	2	Hex nut, 5/16 - 18
3	40209	2	Carburetor stud
4	1240	4	Hex hd screw, 1/4 - 20 x 7/8
5	A433167	1	Carburetor adapter flange
6	433168	1	Carburetor adapter gasket
7	1141	4	Flat hd screw, 10 - 24 x 1/2
8	433404	1	Deflector plate
9	433406	1	Deflector plate gasket
10	A433158	2	Reed plate w/reeds, stops and screws
11	335160	4	Reed
12	88161-3	4	Reed stop
13	1298	16	Rd hd screw w/lockwasher, 6 - 32 x 1/4
14	A452387	1	Decal, timing



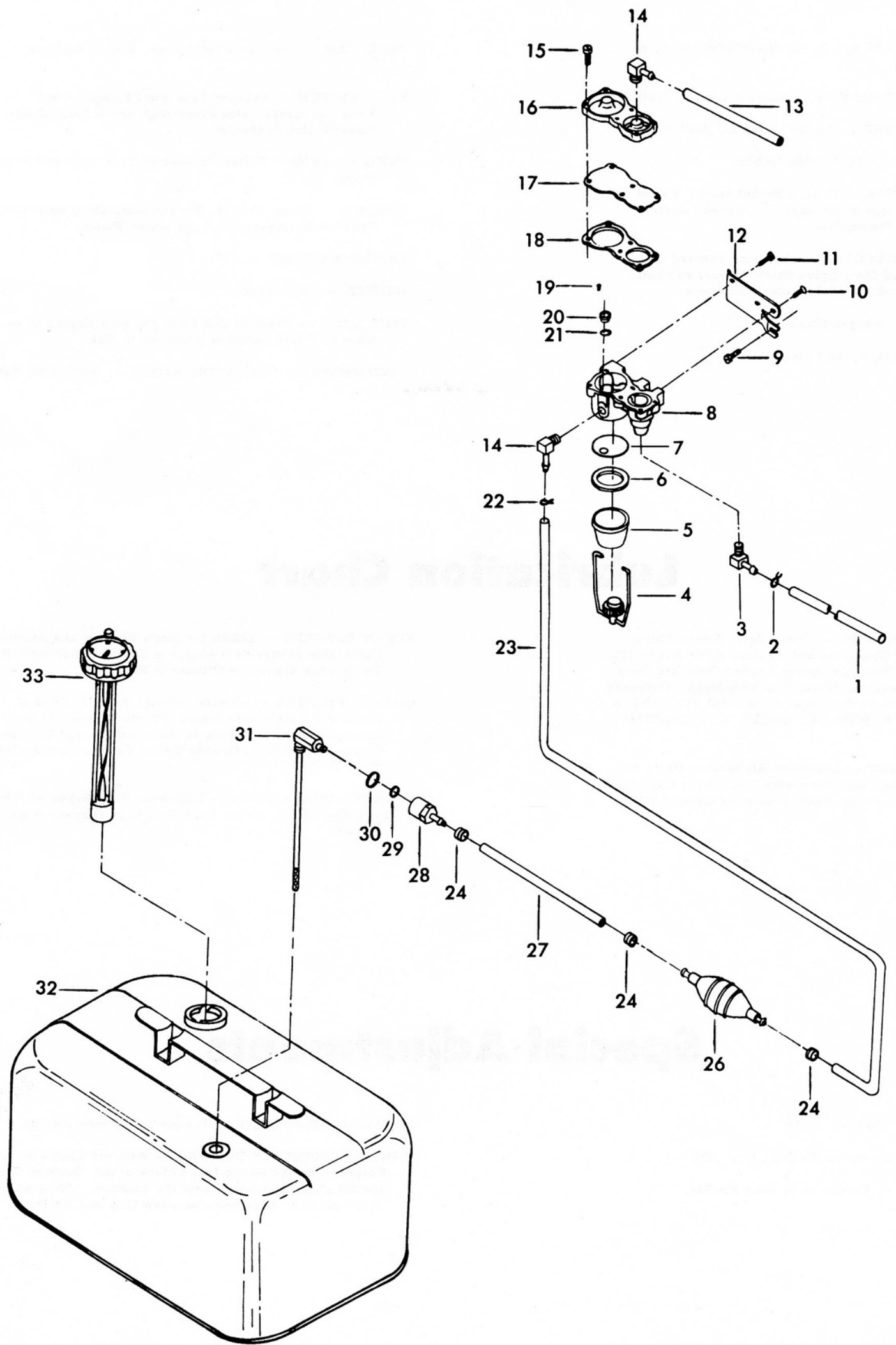
# Motor Leg

ILLUS. NO.	PART NO.	QTY.	DESCRIPTION	ILLUS. NO.	PART NO.	QTY.	DESCRIPTION
1	307279-2	1	Gasket, cylinder exhaust, upper	49	1346	2	Hex nut, S. S., 3/8 - 16
2	433680	1	Spacer plate	50	1904	2	Plain washer
3	307989-1	1	Seal, kingpin plate	51	1593	2	Hex hd screw, S. S., 3/8 - 16 x 3
4	S307940	1	Kingpin plate	52	1656	1	Plain washer
5	89025	1	Dampening pad	53	7001	1	Elastic stop nut
6	307453-3	1	Gasket, cylinder exhaust, lower	54	269929	1	Spacer, tilt stop
7	1946	2	Flanged 12 pt. screw, 5/16 - 18 x 1 3/4	55	366426	1	Tilt stop, port
8	1947	6	Flanged 12 pt. screw, 5/16 - 18 x 2	56	269929	1	Spacer, tilt stop
9	203965	1	Shock mount upper	57	A367072-1	1	Swivel bracket w/bearings and grease fitting
10	215862	2	Shock mount side lower	58	191169-1	2	Swivel bracket bearing
11	433972	1	Shock mount lower cover, star- board	59	A433019	1	Kingpin w/welch plug
12	1326	2	Acorn nut, S. S., 5/16 - 18	60	1669	1	Stop nut
13	307615	1	Gear shift rod upper	61	1636	2	Hex socket hd cap screw, S. S., 3/8 - 16 x 1 1/4
14	1987	1	Plain washer	62	1635	2	Hex socket hd cap screw, S. S., 3/8 - 16 x 3 1/2
15	8049	1	Bowed spring washer	63	433973	1	Shock mount lower cover, port
16	185764	1	Retainer ring	64	1211	2	Hex hd screw w/spring lockwasher, 1/4 - 28 x 5/8
17	1349	1	Hex nut, S. S., 5/16 - 18	65	366133-1	1	Motor leg
18	141704	1	Gear shift rod coupling	66	1905	1	Fill hd screw, 1/4 - 20 x 7/16
19	1129	4	Fill hd screw, S. S., 5/16 - 18 x 1/2	67	40833-4	1	Motor leg exhaust cover gasket
20	183346	1	Shock mount lower	68	A89832-2	1	Motor leg exhaust cover
21	84280	1	Kingpin nut	69	1199	1	Hex hd screw, 1/4 - 20 x 1
22	89011	1	Swivel bracket washer	70	89504	1	Grommet, motor leg exhaust cover
23	213274	3	Grease fitting	71	89323	2	Packing, leg cover lower
24	1817	1	Socket hd set screw, oval point, 5/16 - 18 x 5/16	72	89135-4	1	Motor leg cover, port
25	269929	1	Spacer, tilt stop	73	1473	6	Hex nut, 10 - 24
26	366350	4	Tilt stop pivot	74	89323	2	Packing, leg cover upper
27	366433	1	Tilt stop, starboard	75	89145-4	1	Motor leg cover, starboard
28	1666	2	Bowed spring washer	76	1088	6	Fill hd screw, 10 - 24 x 9/16
29	269929	1	Spacer, tilt stop	77	1849	1	Hex hd screw, S. S., 1/4 - 20 x 1 3/8
30	S433043	2	Stern bracket w/clamp screw and foot	78	1346	2	Hex nut, 3/8 - 16
31	7007	4	Hex nut	79	8038	2	Plain washer
32	366037	1	Stern bracket pivot bolt	80	307962	2	Shock mount
33	A433113	1	Stern bracket lock bar w/handle	81	1502	5	Hex cap screw, 1/4 - 20 x 5/8
34	366884	1	Bearing	82	1160	2	Flat hd screw, 1/4 - 20 x 5/8
35	A338073	2	Clamp screw w/foot	83	66480	2	Stud
36	53075-1	2	Clamp screw handle	84	8537	2	Spring pin
37	1638	2	Spring pin	85	307660-1	1	Tube, leg exhaust
38	24074	2	Screw foot	86	1851	3	Fill hd screw w/lockwasher, 10 - 24 x 1/2
39	366286	2	Stern bracket friction washer	87	8083	2	Spring lockwasher
40	366364	1	Arm, reverse lock	88	1836	1	Spring pin
41	369884	1	Bearing, reverse lock shaft	89	1014	1	Cotter pin
42	366827	1	Handle and shaft	90	1880	1	Plastic plug
43	366510	1	Link, reverse lock	91	433946	1	Cover, shock mount upper
44	366349	1	Reverse lock	92	433114	1	Handle, lock bar
45	366886	2	Pin, reverse lock	93	286461	1	Spring, lock bar handle
46	8094	1	Plain washer	94	1744	1	Spring pin
47	1733	2	Pan hd screw, 10 - 24 x 9/16		452390	1	Decal, reverse lock (not shown)
48	366300	2	Reverse lock spring				



# Gear Housing

ILLUS. NO.	PART NO.	QTY.	DESCRIPTION	ILLUS. NO.	PART NO.	QTY.	DESCRIPTION
1	338129-1	1	Boot	30	8001	1	Nyltite washer
2	338271	1	Retainer	31	97008-1	1	Stud, long
3	A89128-1	1	Driveshaft	32	8065	10	Lockwasher
4	901563	1	Drive pin, water pump impeller	33	1346	2	Hex nut, S.S., 3/8 - 16
5	40342	1	Seal	34	A435621	1	Gear shift arm
6	8042	1	Plain washer	35	2A435266	1	Bevel pinion w/bearing
7	141244	1	Inlet water line	36	435705	1	Gear shift rod lower
8	P293	1	Propeller (Accessory Item)	37	1015	1	Cotter pin
9	A94094-1	1	Propeller nut w/seal and cotter pin	38	85372	1	Pin, gear shift rod lower
10	1027	1	Cotter pin, S.S., 1/8 - 1/2	39	40008	1	Stud, short
11	40342	1	Seal, propeller nut	40	1733	2	Pan hd screw, 10 - 24 x 9/16
12	K-247	1	Propeller pin, pack of 6 w/cotter pin	41	435706	1	Cover, gear housing upper
13	1263	2	Hex socket hd cap screw, S.S., 5/16 - 18 x 9/16	42	435830	1	Gasket, gear housing upper cover
14	2A366298	1	Propeller shaft bearing cage w/seal	43	435555	1	Seal, gear housing
15	141118	1	Seal, propeller shaft	44	A435554	1	Gear housing upper w/seal, washer plug and inlet water tube
16	366058	1	Ball bearing, propeller shaft	45	338618-1	1	Seal, shift rod lower
17	141305	1	Seal, propeller shaft bearing cage	46	435077	1	Screen, water inlet
18	A99662	1	Bevel gear rear w/bushing	47	435057	1	Bearing, driveshaft upper
19	40717	2	Thrust washer, bevel gear	48	40307-2	1	Seal, driveshaft
20	366727	1	Ball, propeller shaft	49	435562	1	Water pump back plate
21	A287098-2	1	Propeller shaft	50	433065	1	Water pump impeller
22	A90871-2	1	Gear shift arm pin w/yoke	51	A341060	1	Water pump body w/seal
23	8568	1	Spring pin	52	349307	1	Driveshaft seal
24	99521-1	1	Clutch	53	93914	1	Seal, inlet water line lower
25	A99023	1	Bevel gear front w/bearing	54	1149	4	Flat hd screw, S.S., 1/4 - 20 x 1 1/4
26	A433054	1	Gear housing lower w/plug, washer and thrust bearing cup	55	A435616	1	Gear shift rod intermediate
27	50109	2	Plug, gear housing	56	S40244-1	1	Inlet water line extension
28	8077	2	Washer, gear housing plug	57	458845	1	Motor leg extension
29	90891	1	Gear shift arm pin	58	1929	8	Hex bolt, S.S., 3/8 - 16 x 1 9/16





# Fuel Pump, Fuel Tank and Line

ILLUS. NO.	PART NO.	QTY.	DESCRIPTION
1	433754	1	Fuel line, pump to carburetor
2	2706772	2	Fuel line clamp
3	40314-1	1	Elbow
4	A89650	1	Fuel sediment bail and nut
5	89500	1	Fuel sediment bowl
6	84617	1	Fuel sediment bowl gasket
7	84653	1	Fuel sediment bowl screen
8	A177431-2	1	Fuel pump body w/valves
9	1578	1	Hex slot hd screw, 1/4 - 20 x 7/8
11	1481	3	Hex hd screw, 1/4 - 20 x 9/16
12	311432	1	Fuel pump mounting bracket
13	89758	2	Fuel pump air hose
14	84314-2	3	Elbow
15	1050	6	Fill hd screw, 10 - 24 x 1
16	84746	1	Fuel pump cover
17	S84747	1	Fuel pump diaphragm w/gasket
18	84760-1	1	Fuel pump gasket
19	1860	2	Rd hd screw, 6 - 32 x 1/4
20	177330	3	Fuel pump valve
21	84792	3	Fuel pump valve gasket
22	97772	3	Fuel line clamp
23	A197752-1	1	Fuel line long w/clamps
24	298788	3	Ferrule
26	S387766-1	1	Fuel line prime bulb
27	A84754-1	1	Fuel line w/clamps
28	197787-2	1	Fuel line coupler
29	213735	1	Seal, fuel line coupler (small)
30	213342	1	Seal, fuel line coupler (large)
31	311755-2	1	Fuel tank adapter
32	9273	1	Fuel tank (Accessory Item)
33	213251	1	Fuel tank gauge cap
	S409752	1	Fuel supply line complete w/coupler
	224394-3	1	Decal, fuel mixture (not shown)

# Specifications

HORSEPOWER -- 55 B.I.A. Certified Brake H.P. at 5250 R.P.M.

MOTOR -- Two-Cycle Twin Cylinder Alternate Firing.

BORE AND STROKE -- 3 3/16" Bore x 2.800" Stroke.

DISPLACEMENT -- 44.7 Cubic Inches.

CONNECTING RODS -- Forged Nickel Steel. Caged Needle Bearings at Crankshaft. Cased Needle Bearings at Piston Pin.

CORROSION PROTECTION -- Lyfanite Treated Castings Stainless Steel Drive Shaft, Propeller shaft, Gear Shift Rod and Underwater Fasteners.

CRANKSHAFT -- Forged Nickel Steel.

STARTER -- Electric, 12 Volt.

FUEL TANK -- Separate Steel Tank, 6 U.S. Gallons

FUEL SYSTEM -- Vacuum Type Fuel Pump. Float Feed Carburetor with Fixed High Speed Jet and Adjustable Low Speed Jet.

FUEL FILTERS -- Filter Screens in Fuel Tank and Fuel Pump.

COOLING -- Water Cooled, Thermostatically Controlled, Positive Displacement Type Water Pump.

TRANSOM HEIGHT -- 20".

WEIGHT -- 153 Pounds.

TILT LOCK -- Positive Tilt Lock Permits Engine to remain in Tilted Position When Not In Use.

RECOMMENDED OPERATING RANGE -- 5000-5500 RPM.

# Lubrication Chart

LOWER GEAR HOUSING -- Check After Every Thirty (30) Hours of Operation and Replace After Every 100 Hours with a Non-Corrosive Leaded Outboard Gear Oil - EP90, such as Wards Sea King Hypoid Outboard Gear Oil - #60-9118 or equivalent. DO NOT USE A CORROSIVE HYPOID OIL UNDER ANY CIRCUMSTANCES.

CONTROL LINKAGE -- Lubricate All Moving Parts and Control Linkage with Riverside Two-Cycle Engine Oil or SAE 30 Oil Twice Each Season or Oftener if Required.

STERN BRACKET -- Lubricate Stern Bracket and Associated Parts with Riverside Two-cycle Engine Oil or SAE 30 Oil Twice each Season or Oftener if Required.

GREASE FITTINGS -- Grease Fittings Are Provided at Critical Points Where Bearing Surfaces are Not Exposed Externally. Using an Automotive Type Grease Gun and Lubricant, Grease Twice Each Season or Oftener if required.

STARTER PINION GEAR -- Lubricate With Rykon #2 EP, Part No. T2961, Twice Each Season or Oftener if Required.

# Special Adjustments

BREAKER POINT GAP -- .020"

SPARK PLUG -- Champion (L-4-J), Gap .030"

FLYWHEEL NUT -- Torque to 70 Foot Pounds.

CYLINDER HEAD BOLT -- Torque to 270 Inch Pounds.

POINT OF THROTTLE OPENING -- With the Throttle Cam Follower Roller on the Index Mark of the Throttle Cam and all Slack Removed From the Linkage, There will be .010" to .020" Clearance between Cam and Roller.